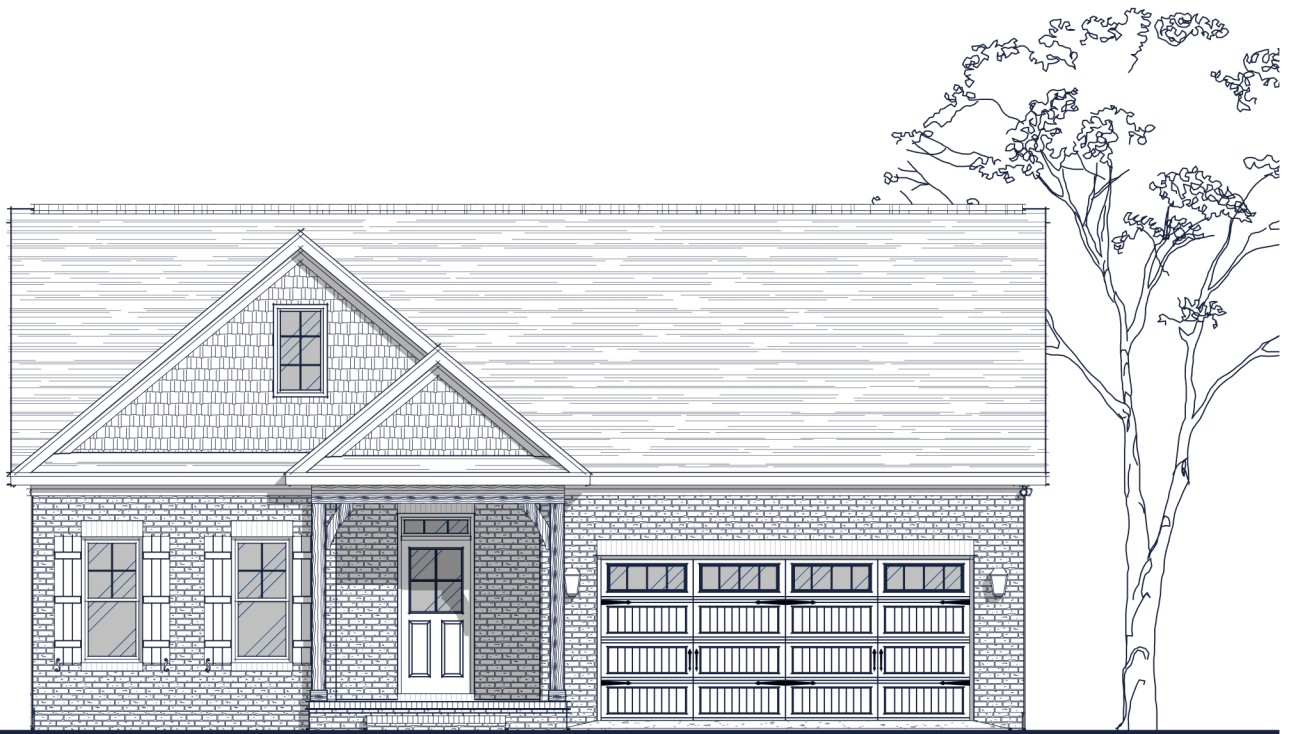




ISEN HOUR  
HOMES

# FLOOR PLAN: SONGER FRENCH COUNTRY



## Specs:

Bedrooms: 3  
 Bathrooms: 3  
 Square Footage: 2,032 Sq.Ft.  
 First Level: 1,407 Sq. Ft.  
 Second Level: 625 Sq. Ft.  
 Width: 42' - 10"  
 Depth: 49' - 1"

## Options Shown:

- ① Bath-3
- ② Unfinished Storage

Watercolors, illustrations, and floor plans are for marketing purposes only and are subject to change at builder's discretion. Square footage is outside veneer and should be independently verified. This is not a legal document.  
 4/26/2023 2:05:40 PM

3411 Healy Drive, Suite A | **Winston-Salem, NC 27103** | 336-659-8211  
 4330 Southport Supply Rd, Suite 101 | **Southport, NC 28461** | 910-363-1620

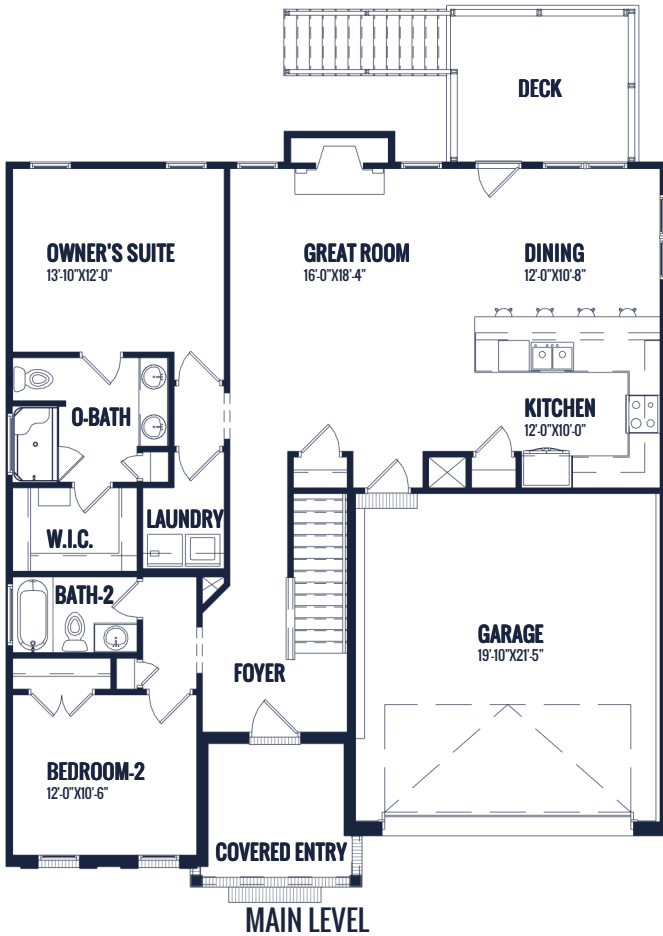


**IsenhourHomes.com**



ISEN HOUR  
HOMES

# FLOOR PLAN: SONGER FRENCH COUNTRY



Watercolors, illustrations, and floor plans are for marketing purposes only and are subject to change at builder's discretion. Square footage is outside veneer and should be independently verified. This is not a legal document.  
4/26/2023 2:05:41 PM

3411 Healy Drive, Suite A | **Winston-Salem, NC 27103** | 336-659-8211  
4330 Southport Supply Rd, Suite 101 | **Southport, NC 28461** | 910-363-1620



**IsehourHomes.com**